



# GMT MONTHLY MEMBERSHIP PROGRESS REPORT

Results as of: 1/31/2020

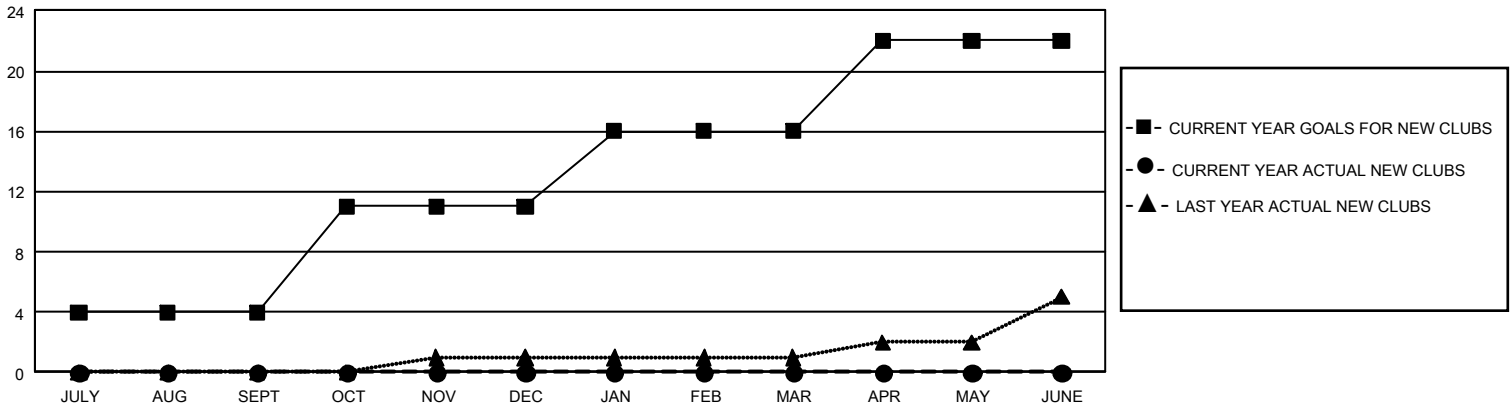
## GMT Constitutional Area 1, Group J

GMT: OPEN

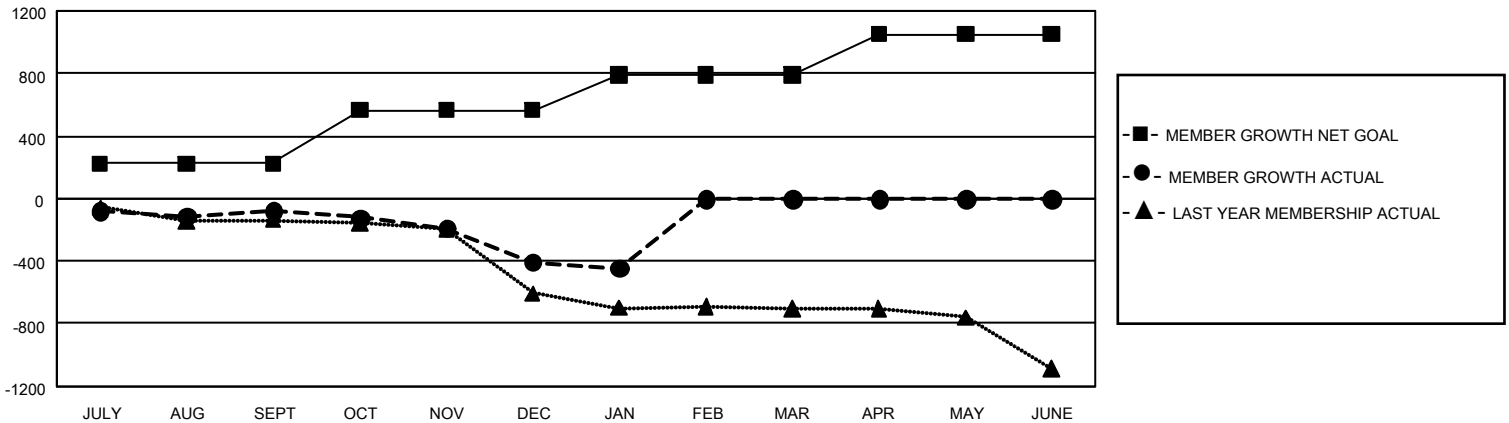
REPORT DOES NOT INCLUDE CLUBS IN UNDISTRICTED AREAS.

Clubs				Members			
RESULTS FOR 2019-2020				RESULTS FOR 2019-2020			
QUARTER	NEW CLUB GOAL	NEW CLUBS	DROPPED CLUBS	QUARTER	MEMBER GROWTH NET GOAL	MEMBER GROWTH ACTUAL	DROPPED MEMBERS ACTUAL (including transfers)
JULY/AUG/SEPT	12	0	2	JULY/AUG/SEPT	669	429	462
OCT/NOV/DEC	21	0	8	OCT/NOV/DEC	1,029	327	637
JAN/FEB/MAR	15	0	1	JAN/FEB/MAR	675	131	164
APR/MAY/JUNE	18	0	0	APR/MAY/JUNE	780	0	0

GOALS AND ACTUAL NEW CLUBS CUMULATIVE



GOALS AND ACTUAL MEMBERS CUMULATIVE



<b>DROPPED CLUBS: 11</b>	316 CLUBS OF 750 ADDED 1 OR MORE NEW MEMBERS	<u>GENDER DISTRIBUTION</u>	
<u>DROPPED MEMBERS</u>		MALE	13,410 (71.57%)
DECEASED	155	FEMALE	5,327 (28.43%)
CLUB CANCELLED	61	TOTAL FAMILY UNIT MEMBERS	
OTHER	1,045	3,371	
<b>TOTAL</b>	<b>1,261</b>	FAMILY MEMBERS PAYING HALF DUES	
		1,716	

[CLICK HERE FOR CUMULATIVE MEMBERSHIP DATA](#)